

ATTACHMENT AA

**RECIRCULATED DRAFT ENVIRONMENTAL IMPACT REPORT / SUPPLEMENTAL DRAFT ENVIRONMENTAL
IMPACT STATEMENT COVER PAGE AND SIGNATURE
AND
PROJECT CATEGORY ASSIGNMENT MEMORANDUM**

**RECIRCULATED DRAFT EIR / SUPPLEMENTAL DRAFT EIS COVER PAGE AND SIGNATURE
AND PROJECT CATEGORY ASSIGNMENT MEMORANDUM**

ATTACHMENT AA

Mid County Parkway, a new freeway from the City of Perris in the west to the City of San Jacinto in the east.

**RECIRCULATED DRAFT ENVIRONMENTAL IMPACT REPORT/SUPPLEMENTAL DRAFT
ENVIRONMENTAL IMPACT STATEMENT AND REVISED DRAFT SECTION 4(F) EVALUATION**

Submitted Pursuant to: (State) Division 13, California Public Resources Code
(Federal) 42 USC 4332(2)(C) and 49 USC 303

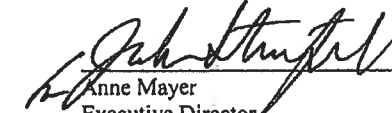
U.S. DEPARTMENT OF TRANSPORTATION
Federal Highway Administration, and
THE STATE OF CALIFORNIA
Department of Transportation, and
THE RIVERSIDE COUNTY TRANSPORTATION COMMISSION

COOPERATING AGENCY: U.S. Army Corps of Engineers

RESPONSIBLE AGENCIES:
California Department of Fish and Game,
California Public Utilities Commission,
County of Riverside,
City of Perris, and
City of San Jacinto

1/16/13

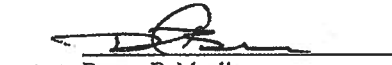
Date of Approval



Anne Mayer
Executive Director
Riverside County Transportation Commission
CEQA Lead Agency

1/16/13

Date of Approval



FOR Basem E. Muallem
District 8 Director
California Department of Transportation¹

1/18/13

Date of Approval



Vincent Mammano
Division Administrator
Federal Highway Administration
NEPA Lead Agency

The following persons may be contacted for additional information concerning this document:

Ms. Cathy Bechtel
Riverside County Transportation Commission
4080 Lemon Street, 3rd Floor
Riverside, CA 92501
(951) 787-7141

Mr. Tay Dam
Federal Highway Administration
888 South Figueroa Street, Suite 1850
Los Angeles, CA 90017-5467 3337
(916) 498-5001

Abstract: The Mid County Parkway project will provide a new freeway that will effectively and efficiently accommodate regional west-east movement of people and goods between and through the cities of San Jacinto and Perris. Potential benefits from future implementation include increased accessibility for residents and businesses and the relief of traffic congestion on the regional and local transportation network. Key issues include impacts to community character and cohesion, growth-related effects, biological resources, aquatic resources, cultural resources, aesthetics, residential relocations, business relocations, traffic noise, and temporary construction effects.

If you have any comments regarding the proposed Mid County Parkway project, please send your written comments by March 11, 2013, to Ms. Cathy Bechtel, Riverside County Transportation Commission at the above address.

¹ FHWA is the lead agency under the National Environmental Policy Act (NEPA), in cooperation with Caltrans.


Memorandum

*Flex your power!
Be energy efficient!*

To: **LUIS BETANCOURT**
Deputy District Director
Design, MS 1267

Date: July 17, 2008

File: 08-Riv-Mid County Parkway
KP 0.0/51.0 (PM 0.0/31.7)
Construct New Freeway
On Mid County Parkway
From I-15 to SR-79
08250-0F3200

From: JON BUMPS 
Office Chief
Design H, MS 1164


Subject: **Project Category Assignment**

Approval is requested for assignment of the above-referenced projects to Category 1, in accordance with requirements in Chapter 8, Section 5 of the Project Development Procedures Manual.

The project proposes a new divided highway with access control and with grade separations at local interchanges. RCTC proposes to recommend this facility for adoption as a new State Route alignment on or near Cajalco Road and Ramona Expressway.

This project requires access control, new alignment, new right-of-way, and adoption of a new route by the California Transportation Commission (CTC).

Approved by


LUIS BETANCOURT
Deputy District Director
Design

7/17/08

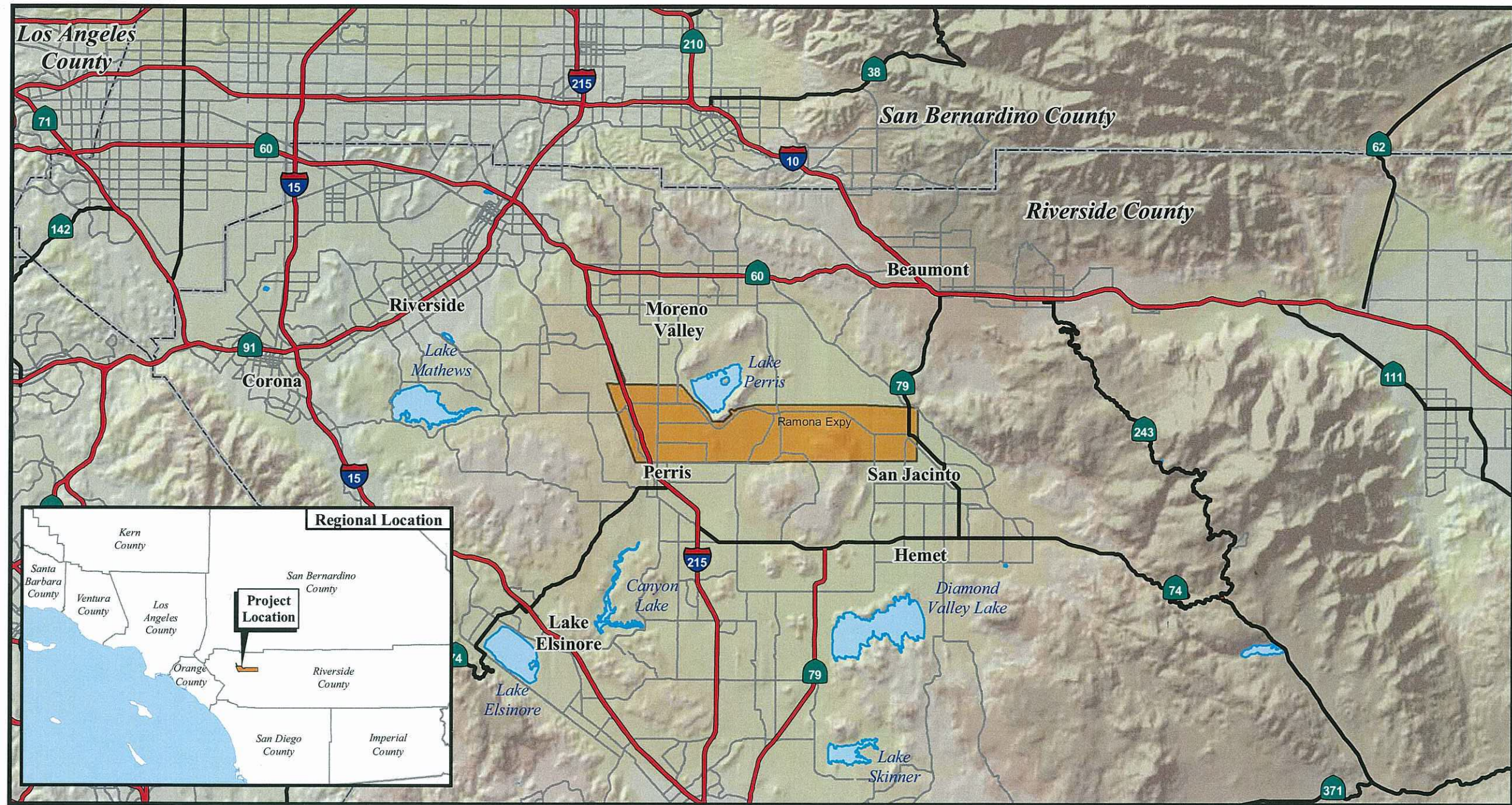
Date

c: NElias, Project Manager, MS 1229
File

Jim Sun / js

PROJECT CATEGORY ASSIGNMENT MEMORANDUM

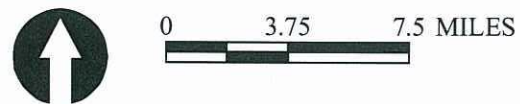
ATTACHMENT A
VICINITY MAP



LEGEND

 Mid County Parkway Study Area

SOURCE: ESRI (2008); TBM (2010), Jacobs Engineering (02/2011)



Regional Location

08-RIV-MCP PM 0.0/16.3; 08-RIV-215 PM 28.0/34.3
EA 08-0F3200 (PN 080000125)

